

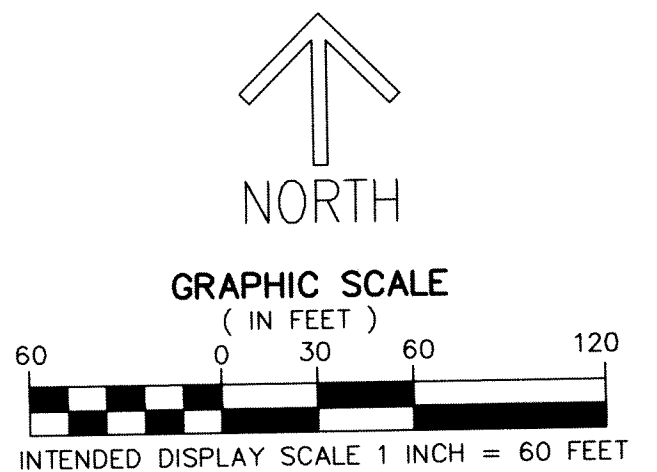
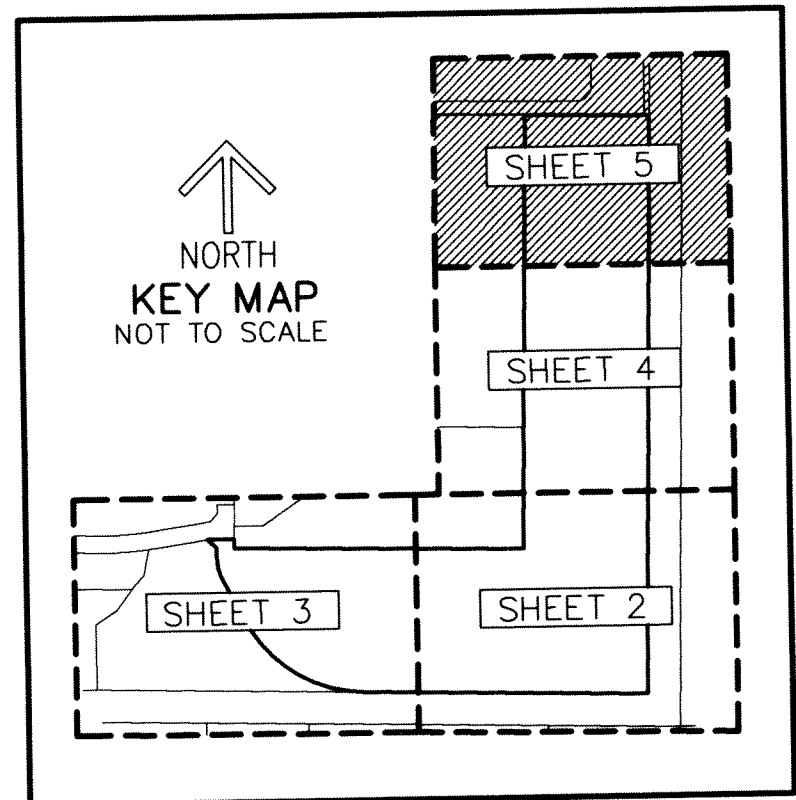
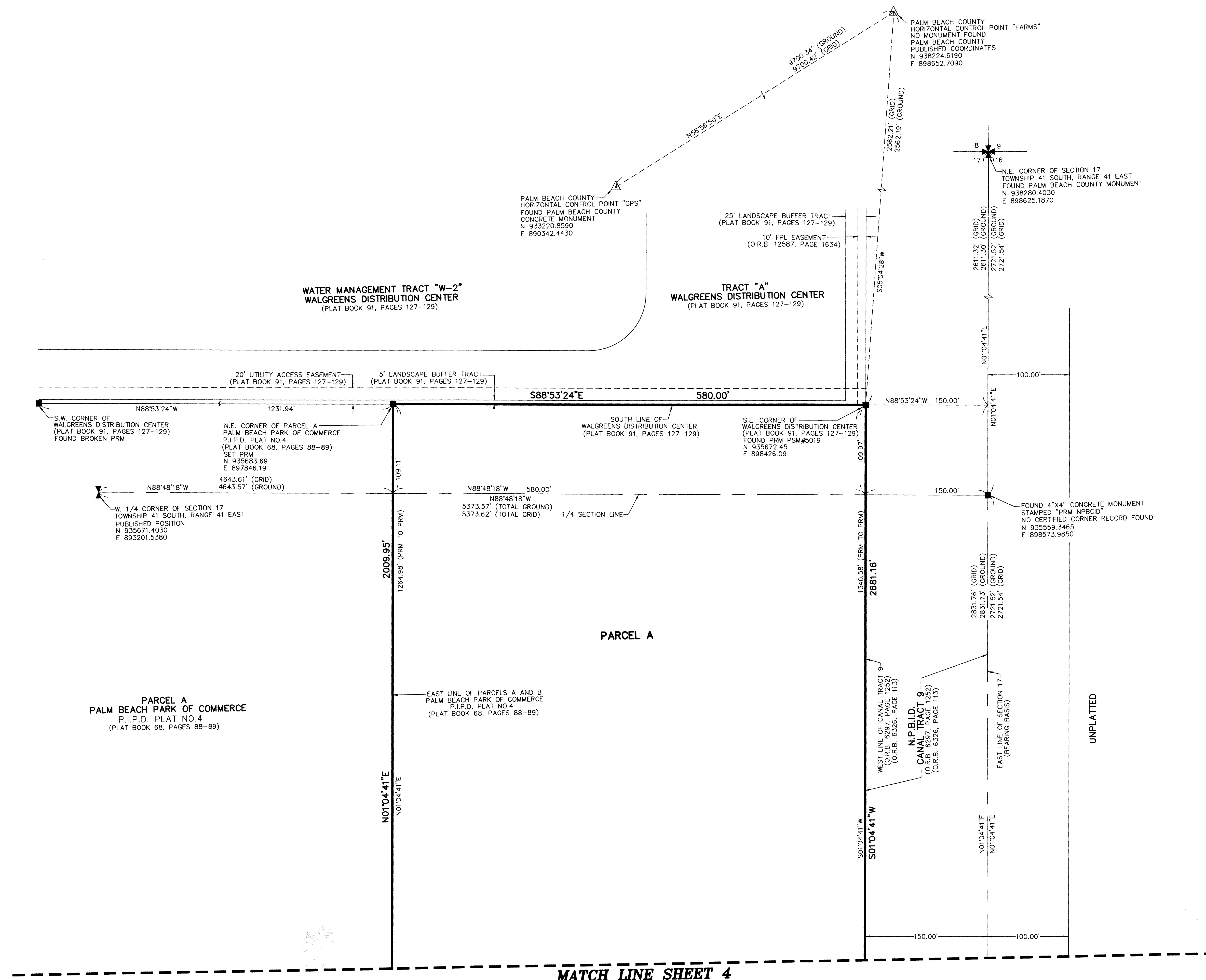
THIS INSTRUMENT PREPARED BY
DAVID P. LINDLEY
OF
CAULFIELD and WHEELER, INC.
SURVEYORS - ENGINEERS - PLANNERS
7900 GLADES ROAD, SUITE 100
BOCA RATON, FLORIDA 33434 - (561)392-1991

PALM BEACH PARK OF COMMERCE P.I.P.D. PLAT NO. 17

BEING A REPLAT OF A PORTION OF CALBUT GENPAR TRACT A,
AS RECORDED IN PLAT BOOK 45, PAGES 70 AND 71 AND A PORTION OF DONALD ROSS ROAD,
PALM BEACH PARK OF COMMERCE, P.I.P.D., PLAT NO. 4, AS RECORDED IN PLAT BOOK 68, PAGES 88 AND 89
ALL OF THE PUBLIC RECORDS OF PALM BEACH COUNTY, FLORIDA,
TOGETHER WITH A PORTION OF SECTION 17, TOWNSHIP 41 SOUTH, RANGE 41 EAST, PALM BEACH COUNTY, FLORIDA,
ALL LYING IN SECTION 17, TOWNSHIP 41 SOUTH, RANGE 41 EAST, PALM BEACH COUNTY, FLORIDA

185

SHEET 5 OF 5



NOTES
COORDINATES, BEARINGS AND DISTANCES
COORDINATES SHOWN ARE GRID
DATUM = NAD 83 1990 ADJUSTMENT
ZONE = FLORIDA EAST
LINEAR UNIT = US SURVEY FEET
COORDINATE SYSTEM 1983 STATE PLANE
TRANSVERSE MERCATOR PROJECTION
ALL DISTANCES ARE GROUND UNLESS OTHERWISE NOTED
SCALE FACTOR = 1.0000852
GROUND DISTANCE X SCALE FACTOR = GRID DISTANCE
BEARINGS AS SHOWN HEREON ARE GRID DATUM,
NAD 83 1990 ADJUSTMENT, FLORIDA EAST ZONE.

LEGEND ABBREVIATIONS
A - DELTA (CENTRAL ANGLE)
L - ARC LENGTH
R - RADIUS
CB - CHORD BEARING
CD - CHORD DISTANCE
FPL - FLORIDA POWER & LIGHT CO.
C - CENTERLINE
LB - LICENSED BUSINESS
O.R.B. - OFFICIAL RECORD BOOK
N - NOTHING
E - EASTING
N.P.B.C.I.D. - NORTHERN PALM BEACH COUNTY IMPROVEMENT DISTRICT
P.I.P.D. - PLANNED INDUSTRIAL PARK DEVELOPMENT
(RWLDRR) - RIGHT-OF-WAY LINE DONALD ROSS ROAD
UE - UTILITY EASEMENT
■ PRM - INDICATES SET 4" X 4" X 24" CONCRETE PERMANENT REFERENCE MONUMENT WITH ALUMINUM DISK STAMPED "PRM C&W LB3591" UNLESS OTHERWISE NOTED

MATCH LINE SHEET 4